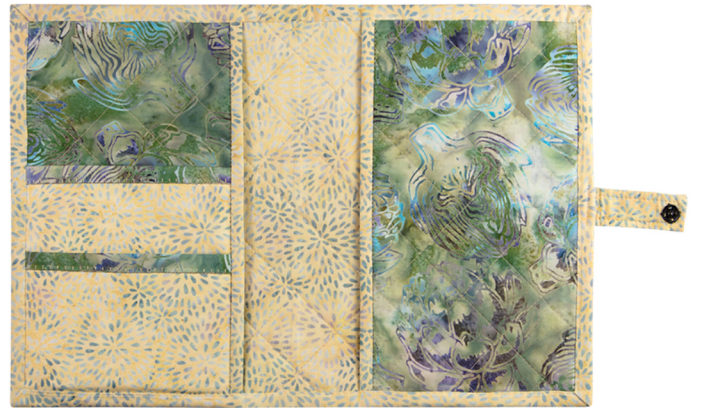




In Full Bloom



Back to Beez-ness Journal Cover

Finished Size 10½" x 16"

Fits a 7" x 9½" Journal



Before Getting Started:

Read all instructions before beginning this project to find valuable tips, save time and minimize mistakes by understanding the process before you begin!

Truly McKenna Art Prints are not pre-shrunk. If you are making a project that will be washed after use, you may want to pre-wash your fabrics.

The term WOF refers to width of fabric.

Use an accurate ¼" seam allowance unless instructed otherwise in pattern directions.

We strive to create accurate patterns, but just as no tree in nature is perfect, neither are we. Visit our website at www.pinneedles.com for any corrections before beginning your quilt.

Materials Needed:

- One *IFB06-P Back to Beez-ness Truly McKenna* Panel
- Fabric 1: MR6-221 Honeysuckle - ½ yard for Lining, Small Pockets and Binding
- Fabric 2: MR2-541 Peace - ¼ yard for Pocket Binding and Side Pockets
- Fusible Fleece - ½ yard
- Woven Fusible - 6" x 20" piece
- One snap
- One small decorative button

Preparing Panel and Fabric:

- Trim Panel to 11½" x 16"
- Fabric 1:
 - Cut 2 - 2½" x WOF strips for Binding
 - From one strip, subcut 2 - 2½" x 11" strips for Side Pocket Binding
 - Cut 1 - 11½" x 16" piece for Lining
 - Cut 1 - 6" x 20" strip for Small Pockets
 - Cut 1 - 1½" x 4" piece for Closure Tab
- Fabric 2:
 - Cut 4 - 11½" x 7" rectangles for Side Pockets
 - Cut 2 - 2" x 6" strips for Pocket Binding
- Fusible Fleece:
 - Cut 1 - 11½" x 16" square
 - Cut 2 - 11½" x 7" squares

Front Cover:

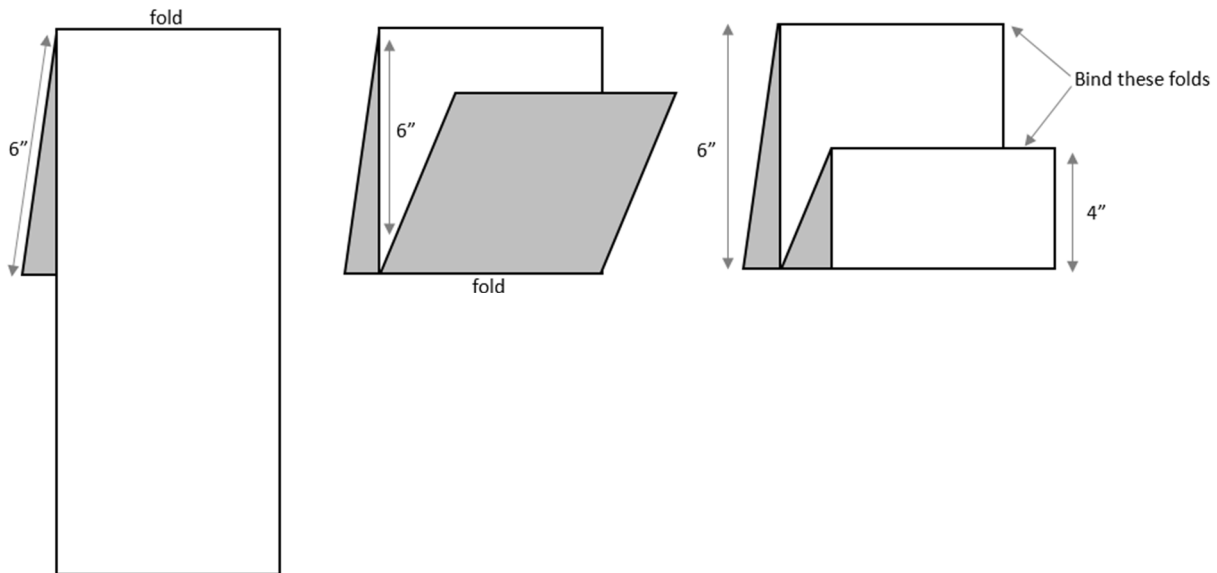
1. Layer the 11½" x 16" Lining fabric right side down, the 11½" x 16" square of fusible fleece and the *Back to Beez-ness* Panel right side up.
2. Quilt as desired.
3. Iron to set the fusible fleece, following the manufacturer's instructions.
4. Trim Piece to 10½" x 15" to create the Front Cover.

Side Pockets:

1. Layer 1 - 11½" x 7" lining fabric right side down, 1 - 11½" x 7" fusible fleece piece and 1 - 11½" x 7" lining fabric right side up.
2. Quilt as desired.
3. Iron to set the fusible fleece, following the manufacturer's instructions.
4. Trim piece to 10½" x 6" to create a Side Pocket.
5. Repeat to create a second Side Pocket.

Small Pockets:

1. Fuse the woven fusible to the wrong side of the Fabric 1 - 6" x 20" strip.
2. Refer to diagrams below. Measure 6" from the top of the strip and fold the fabric back, with fusible web inside the fold. Measure 6" down from the first fold, and fold fabric up, with right side of fabric inside the fold. Measure 4" from the second fold and fold down, with fusible web inside the fold, to create the Small Pockets.



3. Using the 2 - 2" x 6" Fabric 2 strips, bind the folded edges of the Small Pockets indicated in the diagram above. Add decorative stitching to the Pocket binding if desired.
4. Place the Small Pockets on top of one of the Side Pocket pieces, lining up edges and baste Small pockets in place.
5. Using the 2 - 2½" x 11" Fabric 1 strips, bind the right-hand edge of the Small/Side Pocket piece and one edge of the remaining Side Pocket piece.

Closure Tab:

1. Fold the 1½" x 4" Fabric 1 piece in half, right sides facing and press.
2. Stitch along the 4" raw edge and turn right side out to create a "tube".
3. Tuck ½" of one end inside the stitched "tube" to create a finished edge and press. Topstitch a ¼" seam along the three finished edges. Trim the Closure Tab down to 3" in length.

Assembly:

Refer to Diagram One for Pocket placement.

1. Lay the Front Cover Panel side down.
2. Place the Small/Side Pocket piece right side up, on top of the Front Cover, lining up the left, top and bottom edges of the Pocket with the left, top and bottom edges of the Front Cover. Baste along left, top and bottom edge of Pocket.
3. Place the remaining Side Pocket right side up, on top of the front Cover, bound edge towards the center, lining up the left, top and bottom edges of the Pocket with the left, top and bottom edges of the Front Cover. Baste along right, top and bottom edge of Pocket to create the Journal Cover.
4. Flip the Journal Cover over so the Front Cover is facing up.
5. Center the Closure Tab on the left side of the Front Cover, lining up the raw edge of the tab with the raw edge of the front cover and baste in place. *Note: the tab will be pointing towards the center of the Journal Cover
6. Bind the outer edge of the Journal Cover, first stitching the binding to the Front Cover side, and hand stitching the binding to the inside.
7. Fold the Closure Tab away from the center and topstitch to the binding.
8. Add the snap and decorative button Closure Tab and Journal Cover.



Fill your journal cover with *Beautiful things...* patterns, notes, or supplies!!

Diagram One
Back to Beez-nees Journal Cover
Finished Size 10½" x 16"

